

# REACT

## Rapid Evaluation Aerial Connection Tool

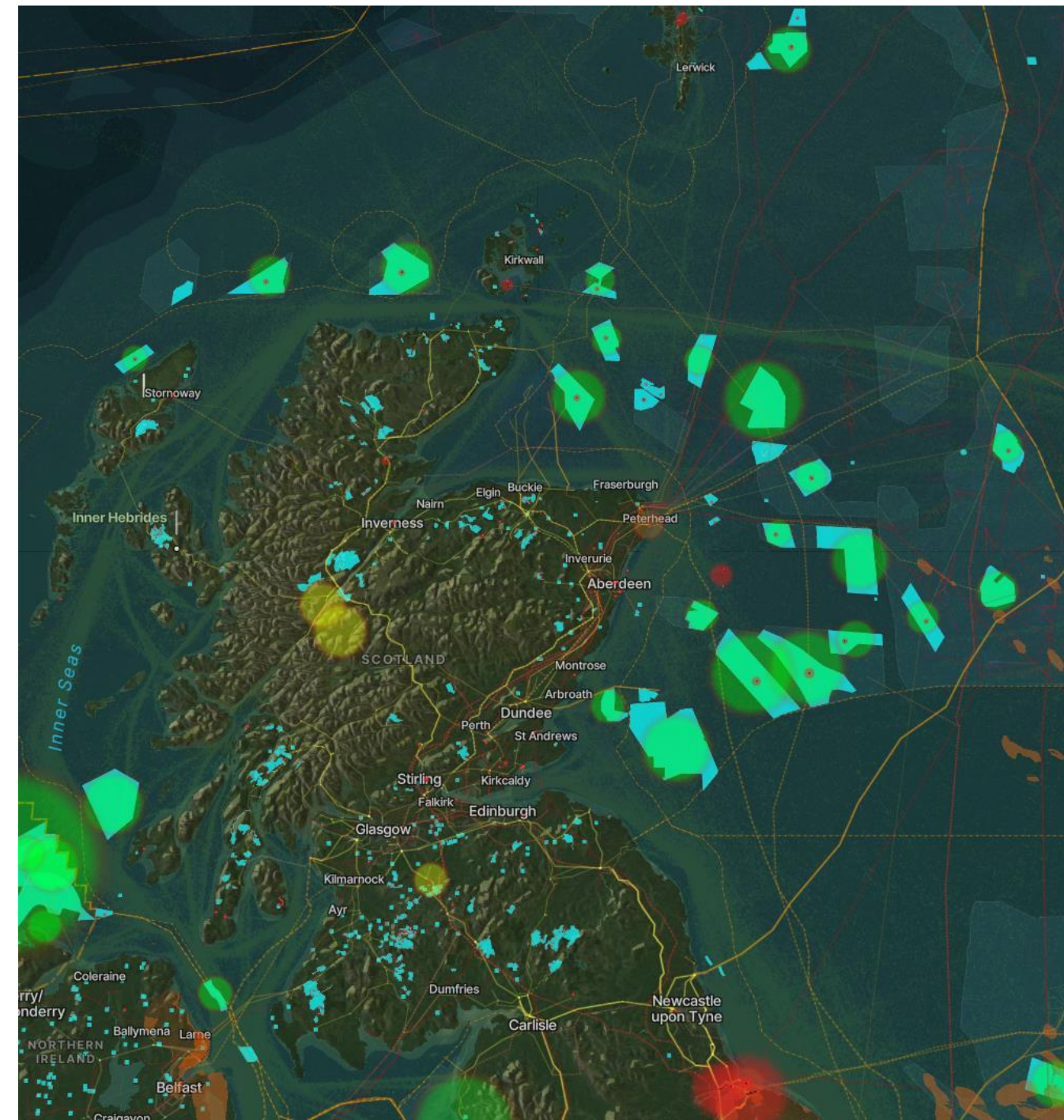
Energy Innovation Summit

*30<sup>th</sup> October 2024*



# The Problem

- The timely connection of renewable energy, new power demand and storage is crucial to realise UK's net zero targets.
- Delays are threatening the decarbonisation of the energy network - and delivering generation to demand.
- Lack of early engagement with planning, consenting and community stakeholders creates planning risk and delays.
- **Currently** the process for reviewing connection requests is carried out in isolation with little opportunity to explore more creative solutions that could be optimal for network, Developer and Consumers/ Community.

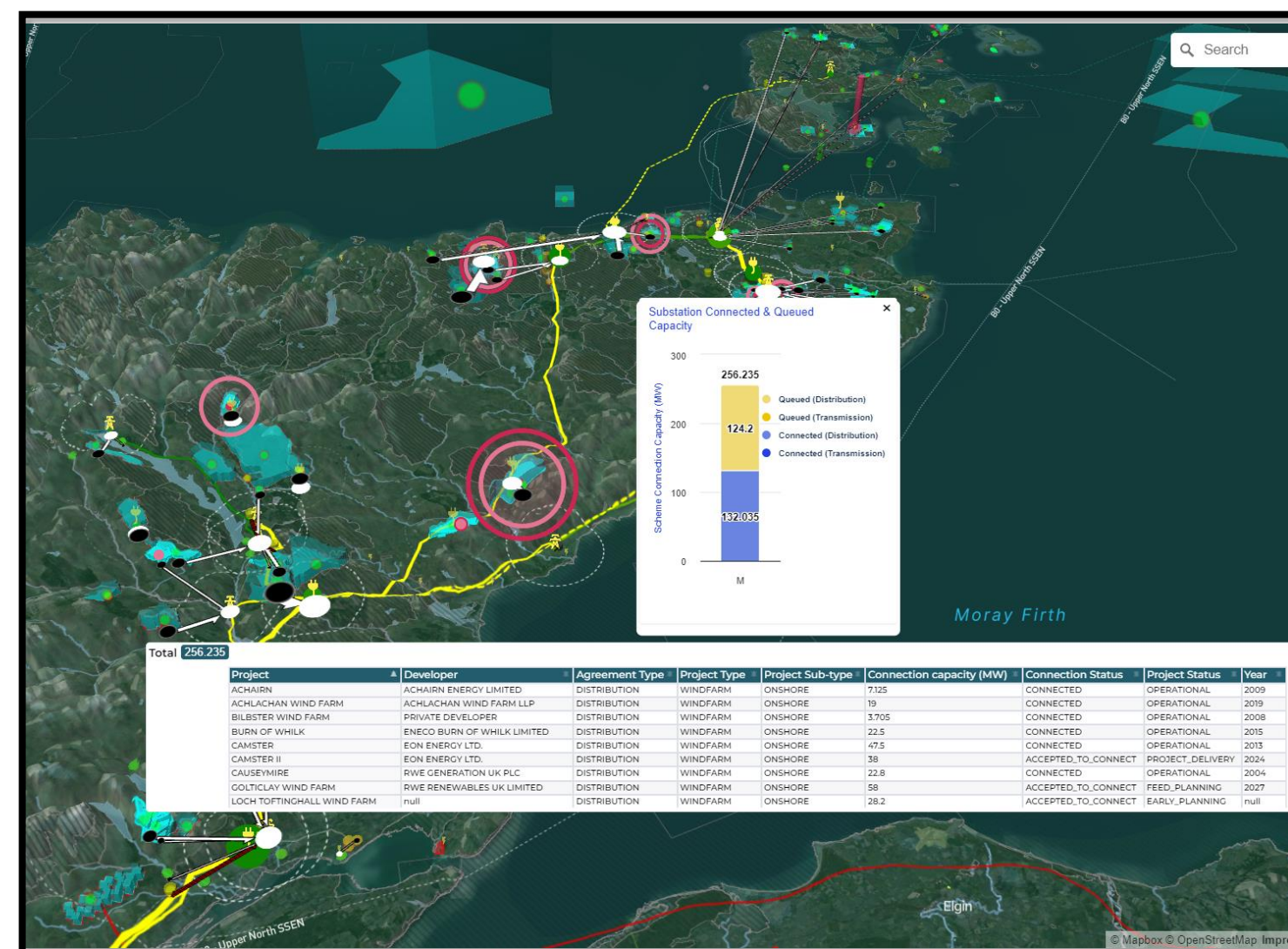




# REACT - Rapid Evaluation Areal Connection Tool

An easy-to-use digital web-based transmission-level geographical planning tool that:

- Is accessible to a wide range of customer connections stakeholders
- Satisfies the requirements of an evolving User Group
- Facilitates exploratory discussions between stakeholders during project shaping and scoping
- Is multi-vector in nature and technology agnostic
- Will encompass the entire GB network - supported by all Transmission Operators



**REACT provides network insight for developers, planning authorities and communities - a key enabler for informed business decisions**

# Collaboration

Agile and Innovative Small Businesses



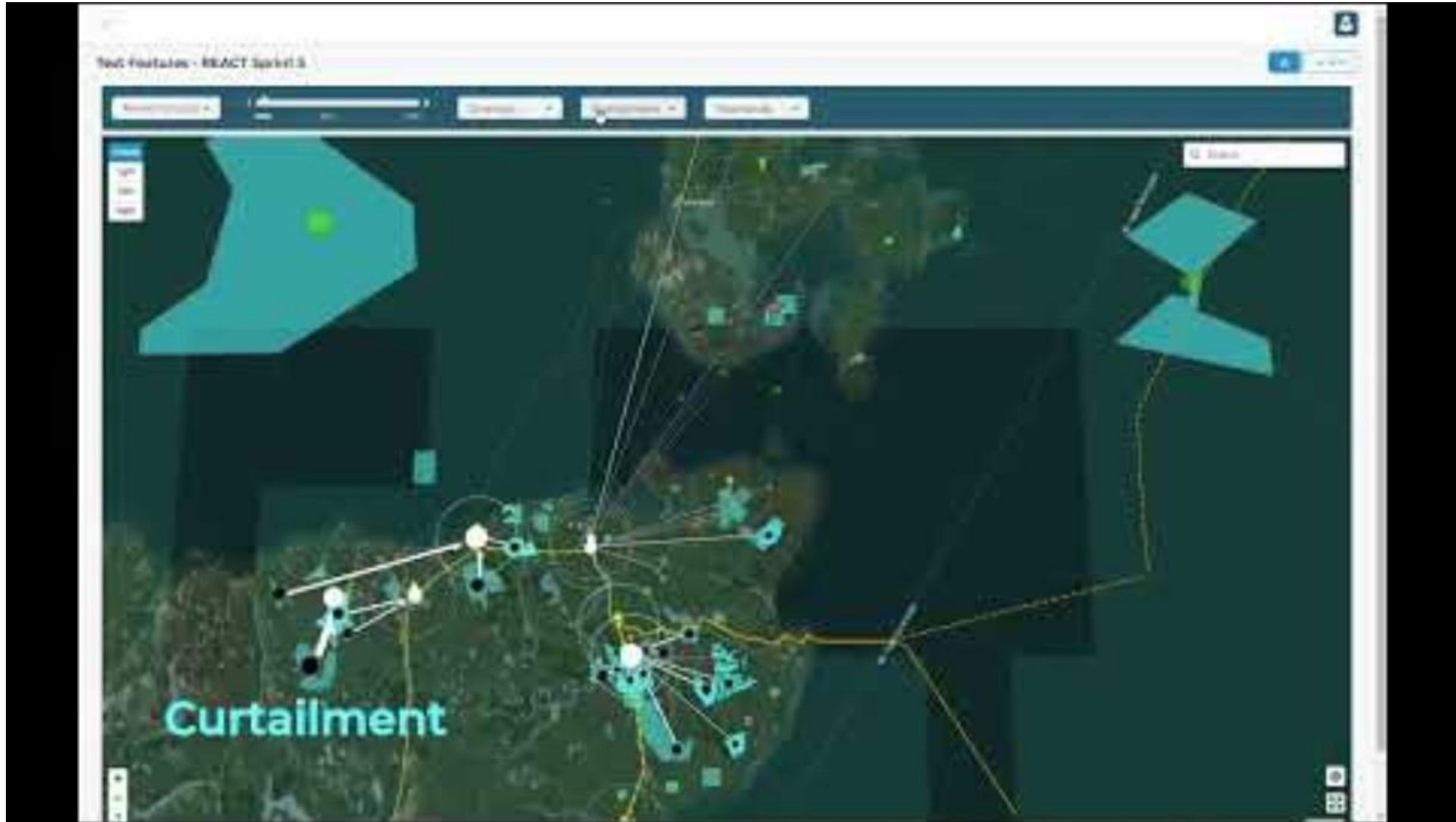
Energy Networks



Committed Allies



# The REACT Tool



# Consumer Benefits

- Curtailment reduction by implementing a more holistic view of the network when considering connections
- Reduced need for using synchronous power generation during 'high winds' lowers carbon emissions
- Network reinforcement reduction:
  - Strategic placement considering the entire network at an early stage
- More streamlined connection application process:
  - Facilitated through a pre-application discussion
- Developers have a greater awareness of their opportunities which will help lead to more informed + creative investment decisions

**Potential Consumer savings: 2032 - 2050**  
**£ 509 million**

Financial  
benefits

Environmental  
benefits

Streamline  
connection  
process

# Wrap Up

## Next Steps

- Project is being taken forward through the NIA with plans to submit a SIF Beta Application thereafter

## Get Involved

- Why not have a go with the tool at the SSEN-T Stand (Stand: **M7**)
- Open invitation to join the Target Group **contact:** [SIFProjects@sse.com](mailto:SIFProjects@sse.com)



**Thank you for your attention**