

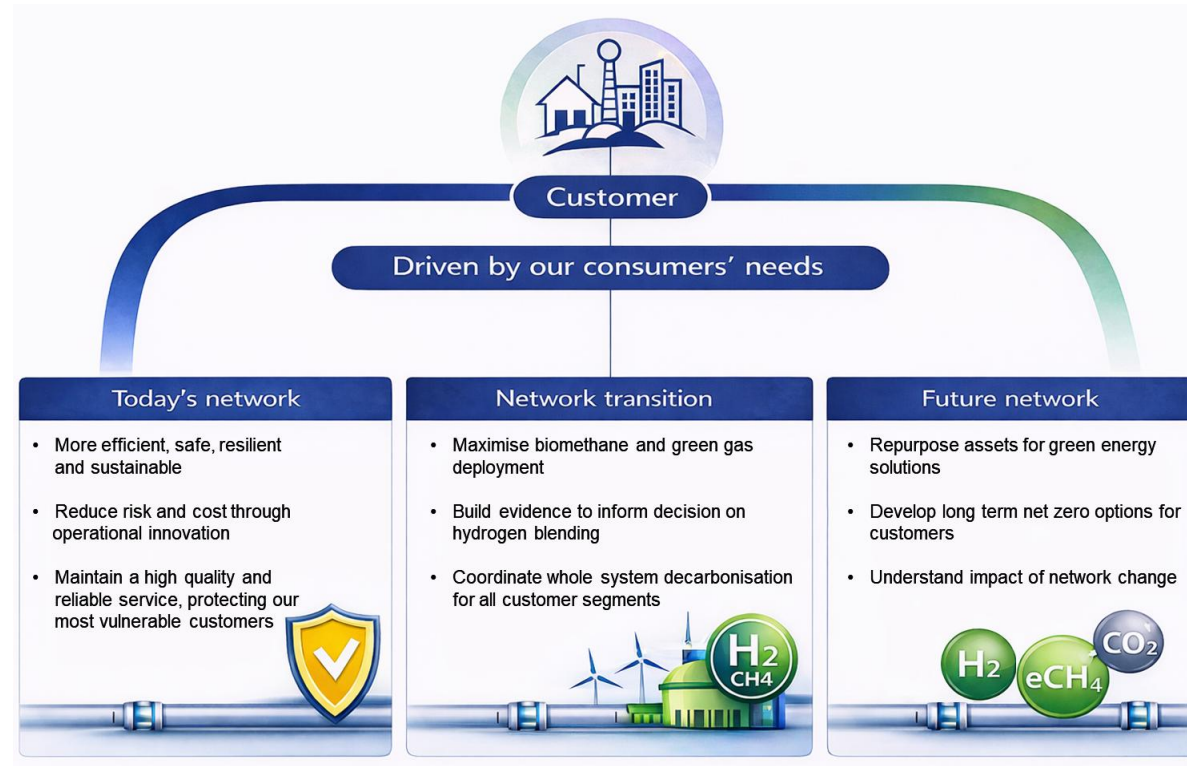


Innovation Basecamp 2026

4th February 2026 – Park Plaza, London



Introduction



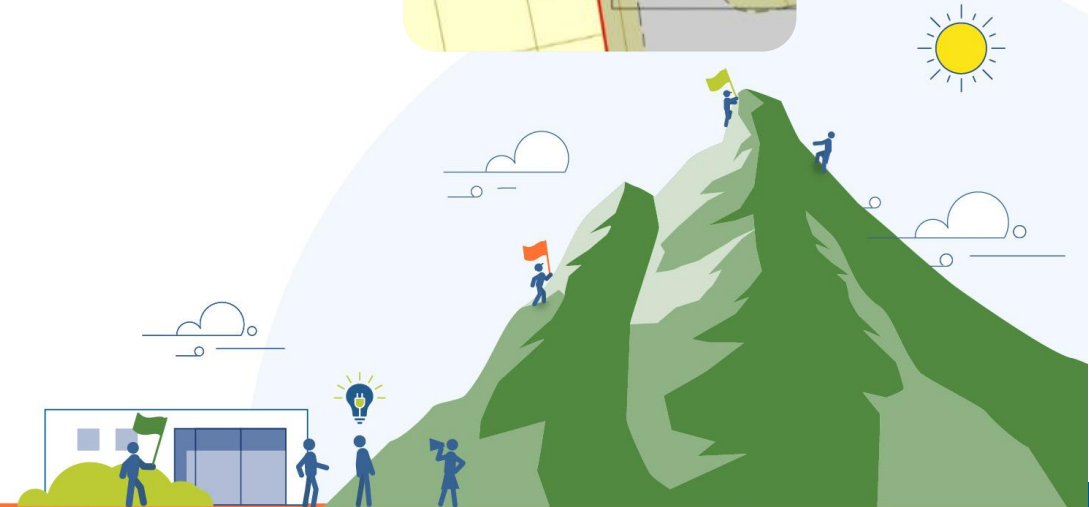
Gordon McMillan

Innovation Scouting & Discovery Lead:



Background Information

- Hundreds of kilometres of SGN services cross beneath roads (often up to 100m in length)
- Assets are :
 - Under Busy highways
 - Need replaced
 - In crowded utility corridors
- REPEX requires intervention

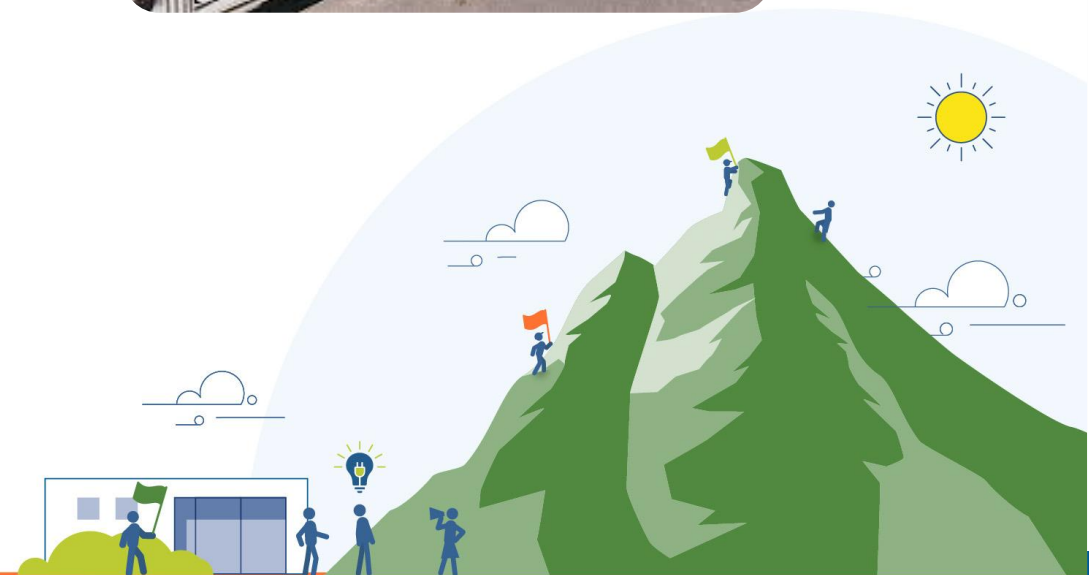


What are the Problems?

Today's approach relies on:

- multiple teams
- extensive traffic management
- long reinstatement periods
- coordination with local authorities

All resulting in high costs, programme delays and significant disruption to the public.



Our Expectations

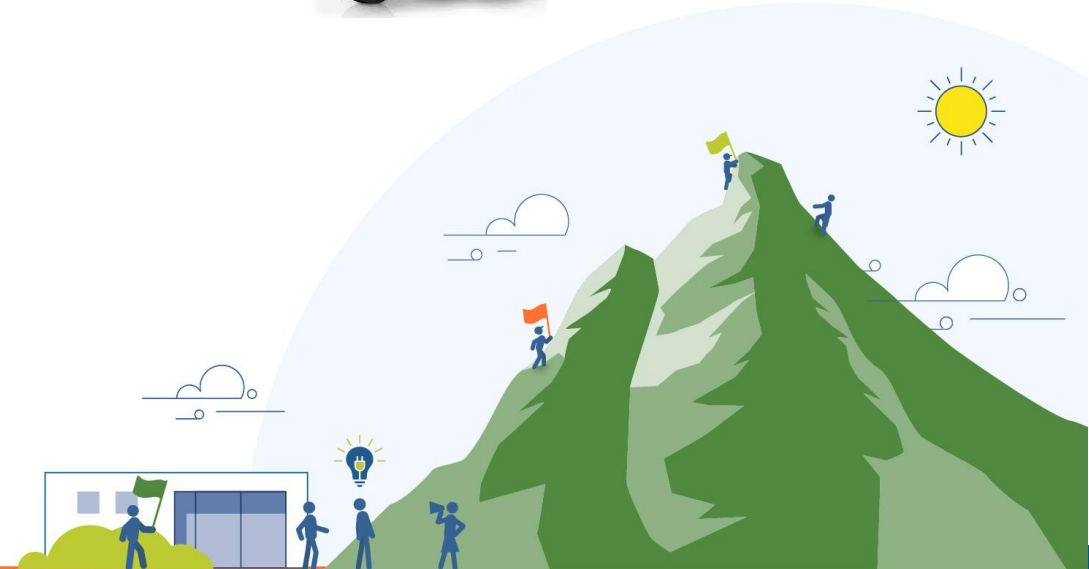
What are we looking for?

Scalable solutions that enable:

- Faster crossroad replacement
- Safer delivery
- Minimal disruption to public

Solutions could include :

- Short-span trenchless or guided robotic solutions
- Advanced subsurface mapping (e.g. GPR, AI-assisted modelling)
- Digital site tools for live cost, progress and reinstatement
- New methods for shared excavation approaches with other utilities



IMPORTANT

It is important for all innovators to note that we are looking for plans rather than just ideas as solutions.



Key Contacts:

Join SGNs Innovation Ecosystem



Gordon McMillan

Innovation Scouting & Discovery Lead
gordon.mcmillan@sgn.co.uk





Energy Networks Association

4 More London Riverside

London SE1 2AU

t. +44 (0)20 4599 7700

🐦 @EnergyNetworks
energynetworks.org

© ENA 2023

Energy Networks Association Limited is a company registered in England & Wales No. 04832301
Registered office: 4 More London Riverside, London SE1 2AU

scan me

A hand-drawn white arrow on a dark blue background, pointing from the text 'scan me' down towards the QR code.

Subscribe to our
newsletter to
receive updates
from ENA

[energynetworks.org/
subscribe](https://energynetworks.org/subscribe)

