

# EIP159\_Accelerating the Adoption of People-Plant Interface (PPI) Safety Technology in Major Infrastructure Projects

EIP159

ENA Basecamp 26



# The Challenge is Growing

- The Pathway to 2030: A massive national upgrade to the UK's electricity transmission network.
- This means a huge increase in construction, heavy plant, and vehicle movements on our sites.
- More activity inevitably means more risk.





# The Human Cost



Being struck by a moving vehicle is consistently a TOP 3 cause of fatal injuries in construction



# Hazards On Our Sites



# A Call For Innovation

## *What are we looking for?*

We are seeking tested, trialable, and scalable PPI technologies to pilot within our P2030 framework.





# Innovate, Adopt and Adapt Technology

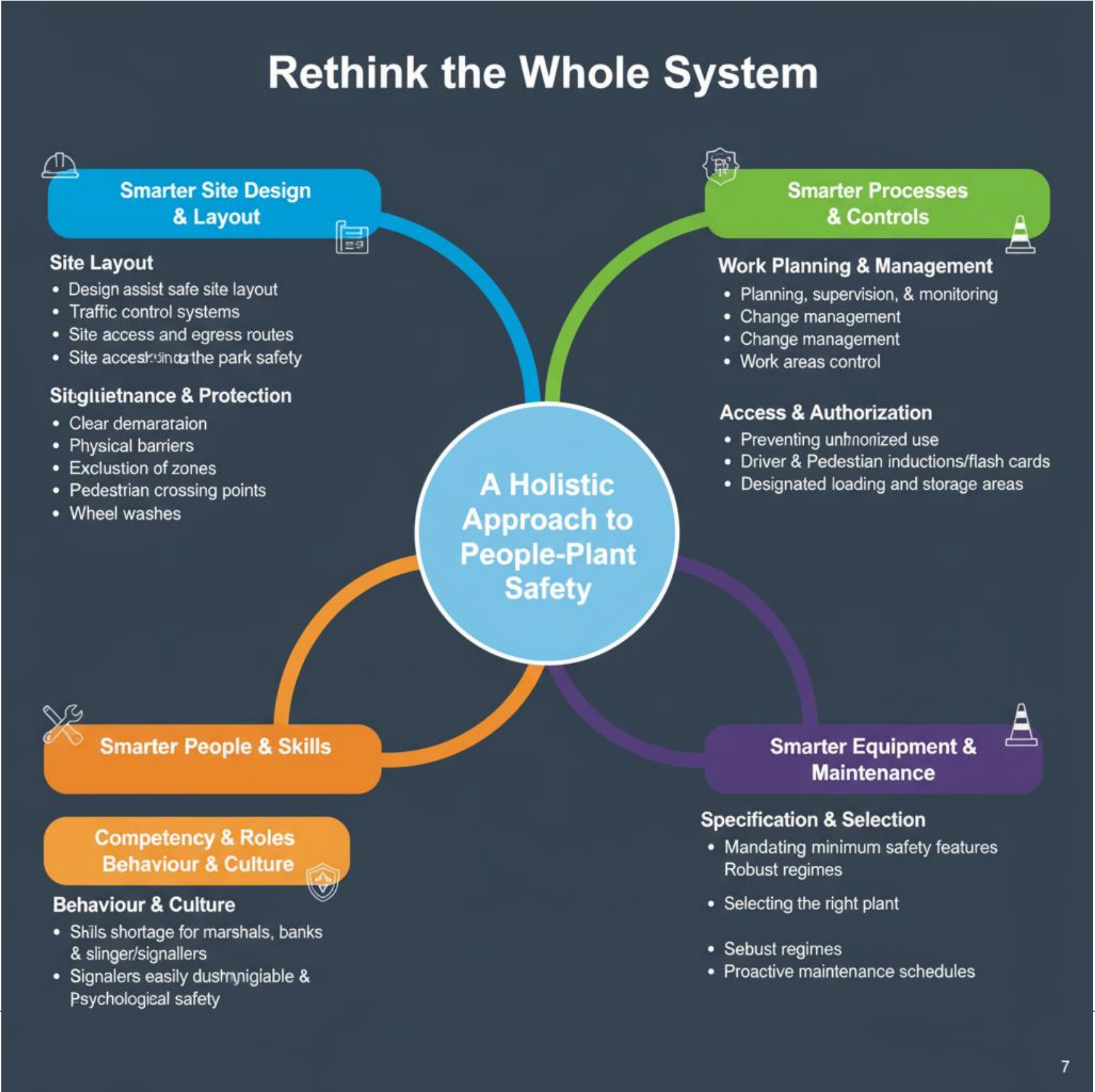
## *Technologies exist, but adoption is inconsistent.*

- 360° / HD cameras
- AI & data analytics - Human Form Recognition
- Thermal Imaging & Infrared cameras & systems
- Video telematics
- Radar detection
- 3d special awareness
- Digital telecommunications
- Digitised thumbs-up
- Wearable imaging & Smart PPE



**Are there proven solutions from other high-risk industries like aviation, manufacturing, defence, or the science industry that we can adapt for our sites?**

# A Call To Action - Building Safely Together



# EIP159: The Pilot Programme: Our Collaborative Testbed

Trial: Select 2-3 distinct technologies for a 12-week pilot on active P2030 sites.

Analyse: Collaboratively collect data on effectiveness and usability.

Recommend: Produce a formal report for our Steering Group to drive adoption