



Innovative Collaboration

Working with our local authorities

James Daniel and Matt Bailey



INVESTORS IN PEOPLE™
We invest in people Platinum



About UK Power Networks



Distribution Network Operator responsible for maintaining the electricity network across London, the South East and East of England



Tasked with leveraging technology and data to facilitate the transition to Net Zero

Supporting Local Authorities



80%

More than 80% of Local Authorities in the UK have declared a climate emergency, with most targeting Net Zero before 2050

Key Needs

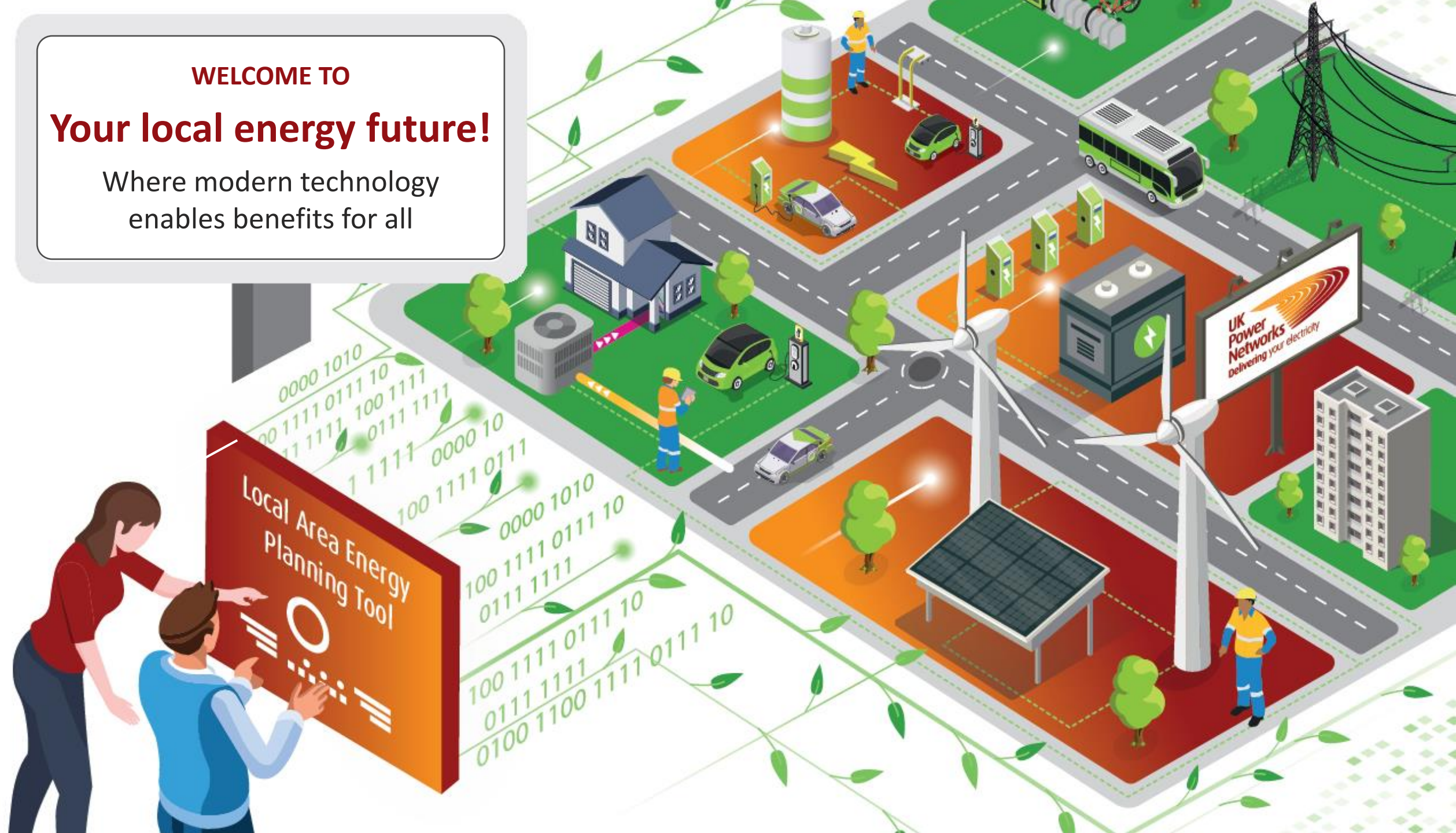
Access to resources and expertise

Access to data

Tools for analysis and spatial mapping

WELCOME TO
Your local energy future!

Where modern technology
enables benefits for all



Where to start?



**Changing Landscape
of Net Zero**

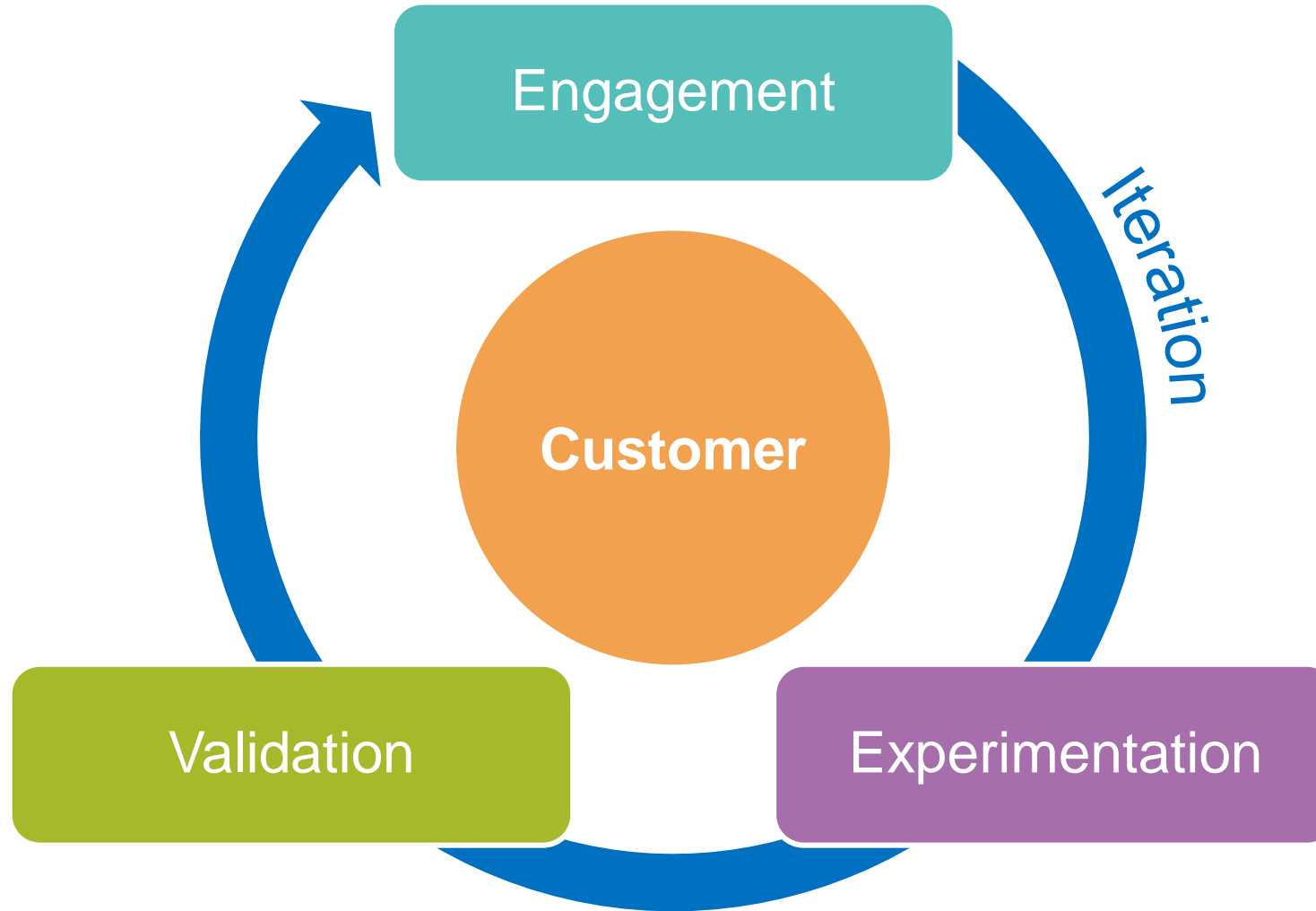


**Diversity of Customer
Perspectives**



**Focus on Individuals
not just Organisations**

Design Thinking Approach



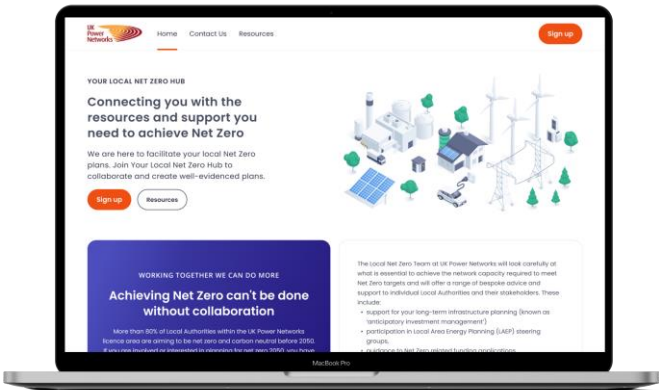
Experimentation



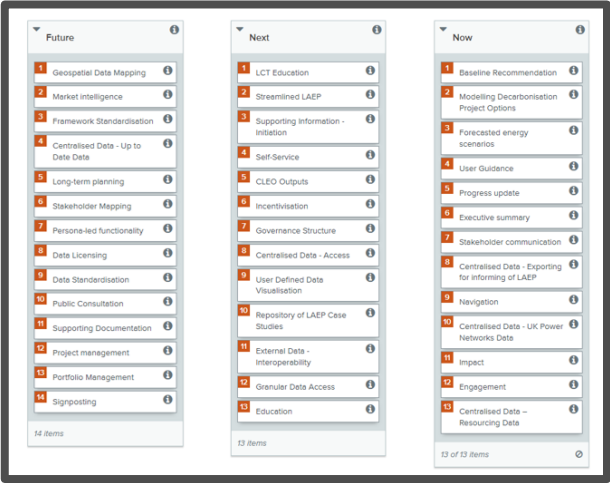
Product Experimentation



Customer Journey Mapping



Rapid Prototyping



Card Sorting

Findings and Insights



Engage in ways that fit your customers



Data is about communication as much as analysis



Flexible use is key

The story so far - Beta



Data Stories

Elmers End Green Energy Plan (DEMO)

Elmers End Green Energy Plan (DEMO)

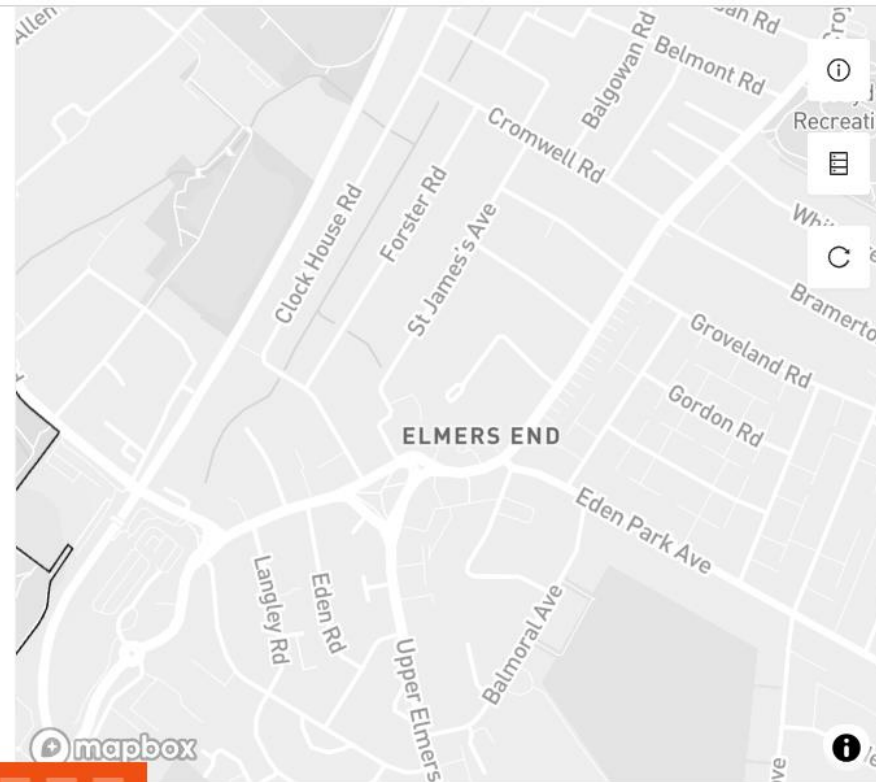
Author: Bromley Council (DEMO)

Last Updated: 31st October 2023

Welcome, you've been invited to review and provide feedback on our Net Zero plans for the Elmers End area. As a resident or local business, we value your thoughts on these plans and the opportunities and impacts they may bring.

Through the following sections, we'll outline our potential plans - showing you where and how we are considering implementing Low Carbon Technologies to support our transition to Net Zero.

Please click on the arrow to the right to continue.



Data Stories

Elmers End Green Energy Plan (DEMO)

Elmers End Green Energy Plan (DEMO)

Author: Bromley Council (DEMO)

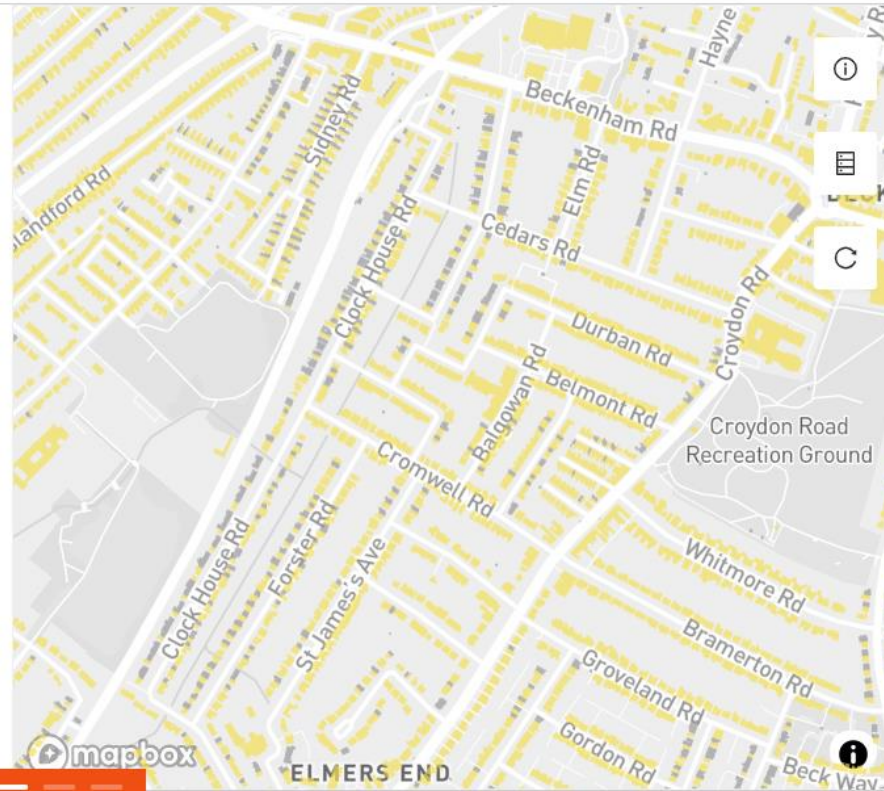
Last Updated: 31st October 2023

Solar Potential

As shown in the building highlighted in yellow on the map - there is substantial potential to install solar panels on residential and commercial buildings in the area.

We're currently investigating schemes that would support installation of PV panels in the area.

Would you be interested in participating in group buying scheme for PV and battery storage systems?



Data Stories

Elmers End Green Energy Plan (DEMO)

Elmers End Green Energy Plan (DEMO)

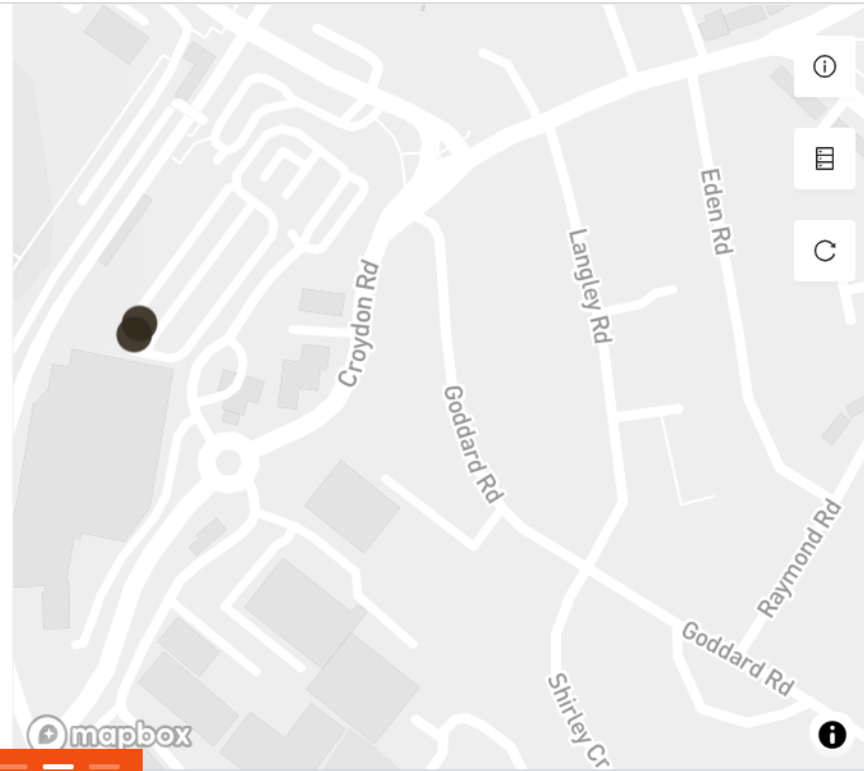
Author: Bromley Council (DEMO)

Last Updated: 31st October 2023

Electric Vehicle (EV) Charge Points

We are also looking to expand the available EV charge points, specifically in the Elmers End station and business park areas.

This is on the basis of requests received from residents and local businesses.



Data Stories

Elmers End Green Energy Plan (DEMO)

Elmers End Green Energy Plan (DEMO)

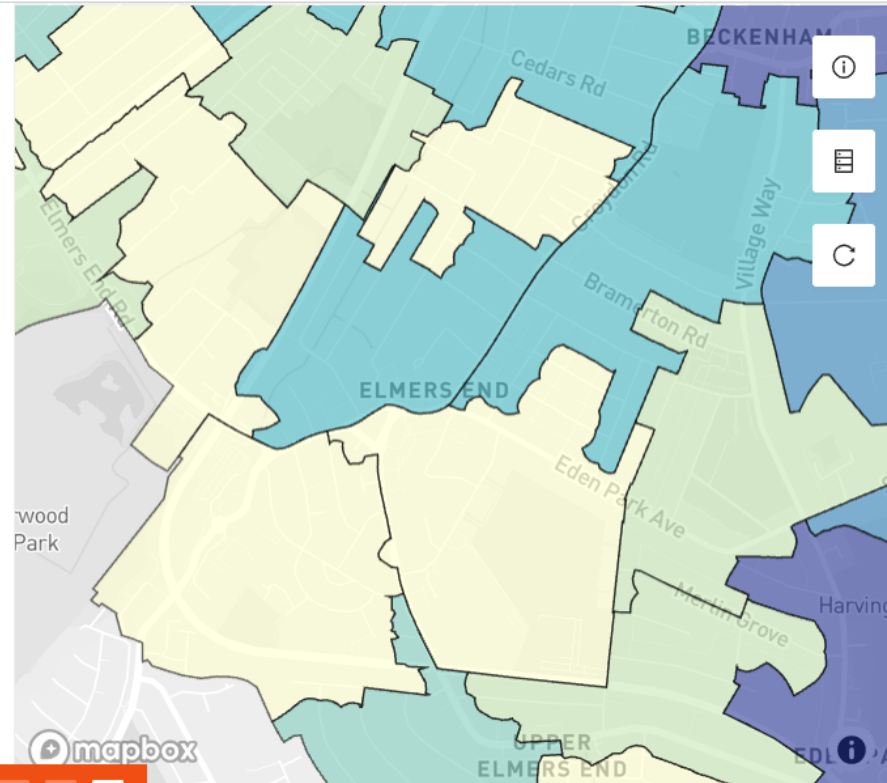
Author: Bromley Council (DEMO)

Last Updated: 31st October 2023

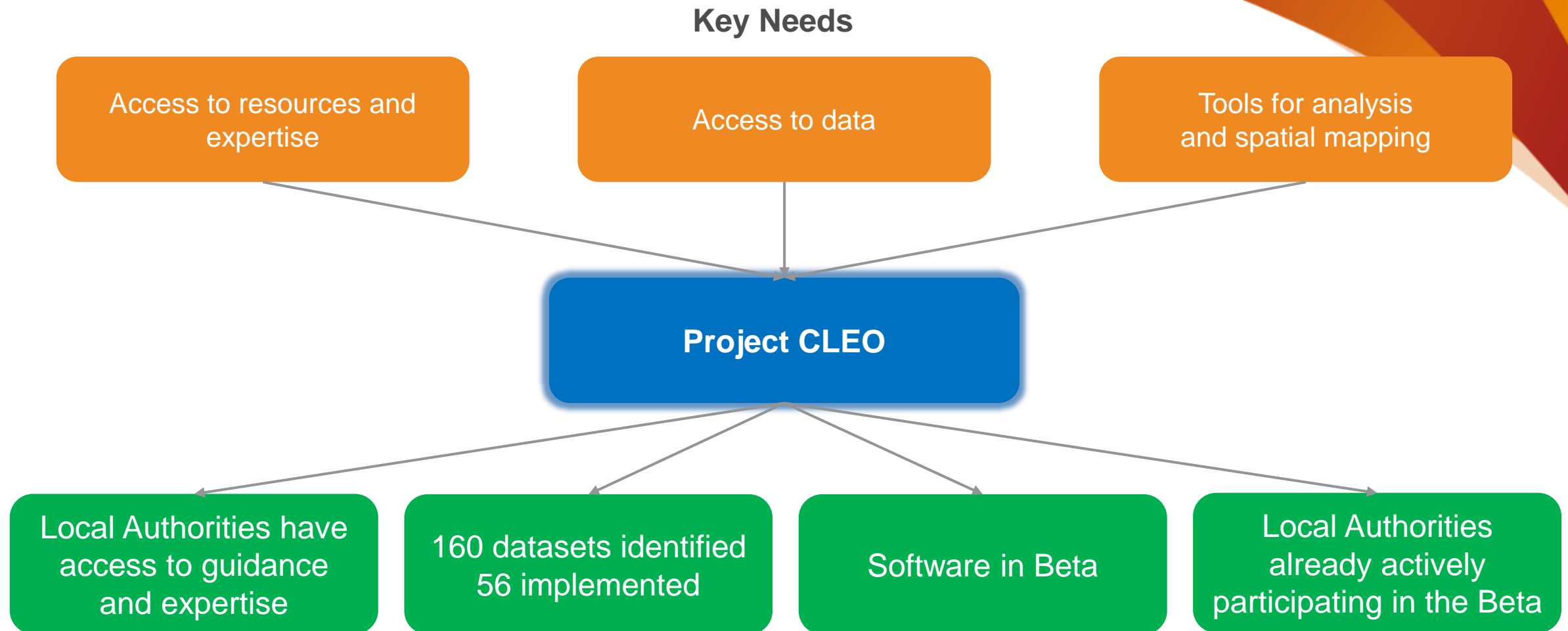
Local Electricity Demand

As electricity demand is expected to increase by 50% over the next 10 years, we want to support local residents in transitioning to greener technologies

This map shows our target areas where darker colours represent greater electricity consumption.



Key Outcomes



Come and find out more...

Interested in what you
have heard and want to
know more?

See us on the UK Power
Networks stand.

