

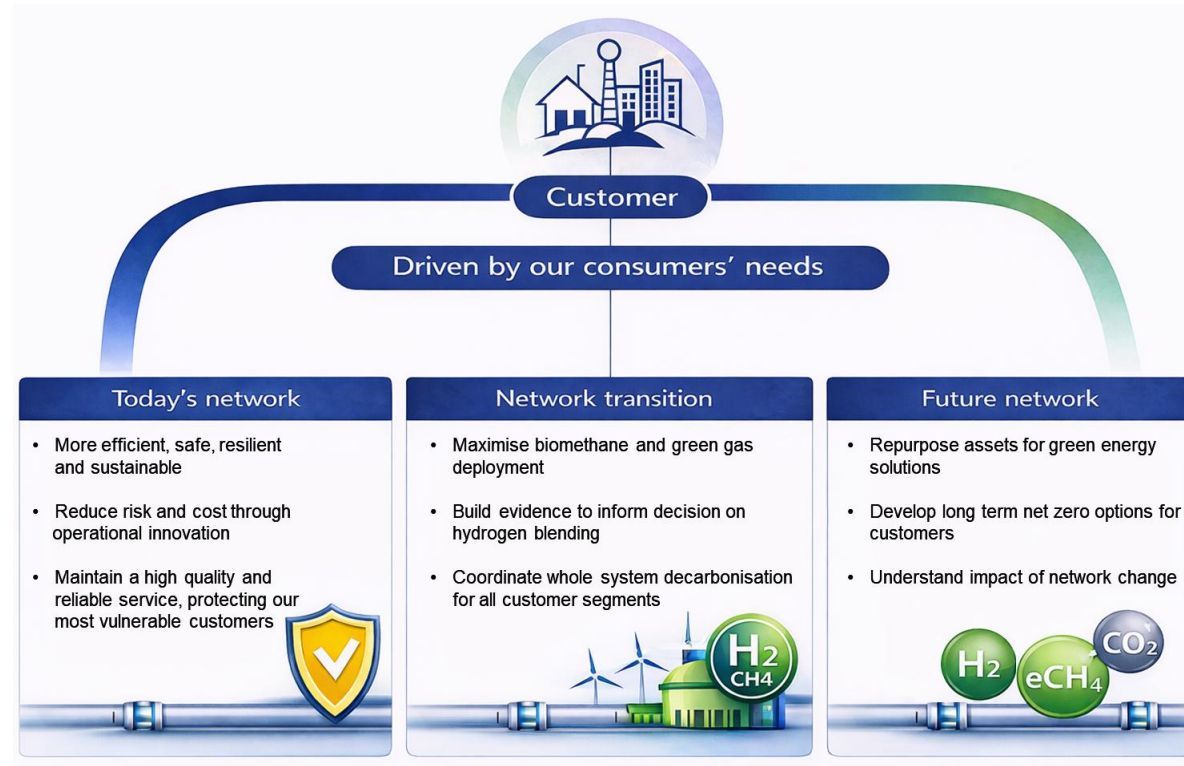


Innovation Basecamp 2026

4th February 2026 – Park Plaza, London



Introduction



Gordon McMillan

Innovation Scouting & Discovery Lead:



Background Information

- **Critical assets need continuous power**
- **Telemetry and SCADA depend on electricity**
- **Pressure control and safety systems require power**
- **Industrial and Commercial customers need resilient energy**



What are the Problems?

- Many sites are rural or remote
- Single fed electricity connections
- The diesel backup is carbon intensive
- Outages reduce system visibility and control



Our Expectations

What are we looking for?

SGN seeks low-carbon, low cost, resilient gas-to-power solutions for network operations and critical loads.

Solutions may include :

- **Fuel cells (natural gas, biomethane or H₂)**
- **Hybrid systems (battery + gas)**
- **Modular gas-to-power units**
- **Waste heat recovery**
- **Smart control systems & telemetry**



IMPORTANT

It is important for all innovators to note that we are looking for plans rather than just ideas as solutions.



Next Steps

Join SGNs Innovation Ecosystem



Gordon McMillan

Innovation Scouting & Discovery Lead

gordon.mcmillan@sgn.co.uk





Energy Networks Association

4 More London Riverside

London SE1 2AU

t. +44 (0)20 4599 7700

🐦 @EnergyNetworks
energynetworks.org

© ENA 2023

Energy Networks Association Limited is a company registered in England & Wales No. 04832301
Registered office: 4 More London Riverside, London SE1 2AU

scan me

A white, hand-drawn arrow originates from the text 'scan me' and points downwards and to the left towards the QR code.

Subscribe to our
newsletter to
receive updates
from ENA

[energynetworks.org/
subscribe](https://energynetworks.org/subscribe)

